



# IP CLASSROOM SOUND AND INTERCOM

*IP SCHOOL INTERCOM, PAGING, MESSAGING, BELL SCHEDULES*

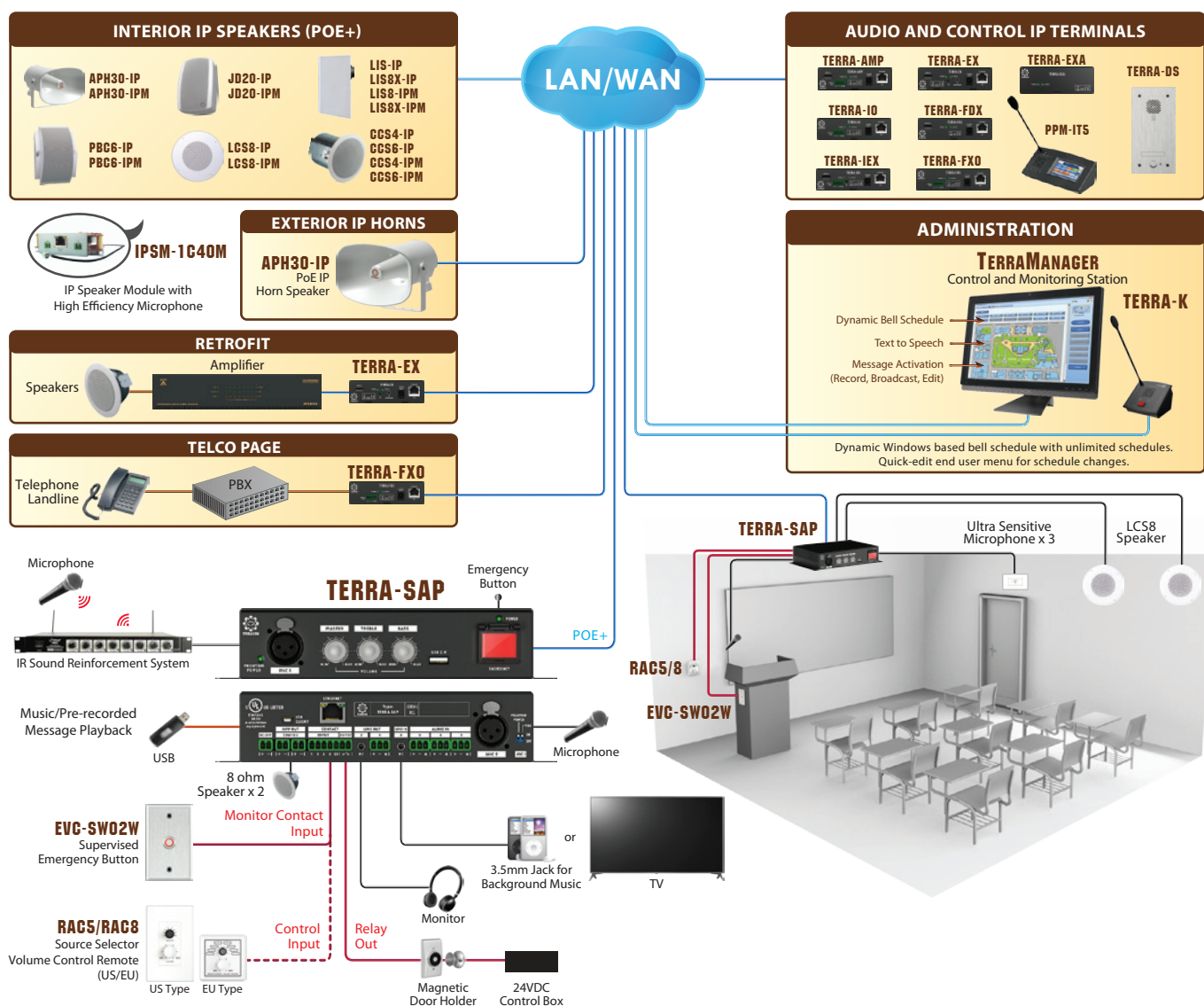


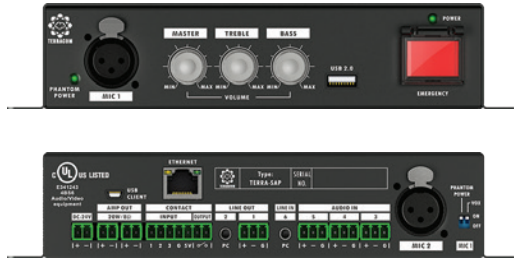
The School Sound System - A full audio over IP-based classroom solution, including teaching, paging, messaging, class change & scheduling, hands-free intercom & emergency communication. The system provides a safe and secure environment for students, staff and visitors. The Terra-SAP is a network connected device that includes a 2CH x 20w amplifier and processor unit that acts as an audio hub for locally connected devices such as mic/line inputs, USB interface for message/music storage and playback, connection with audio-visual devices such as projectors as well as logic input/outputs. Local volume control and audio input selection can be managed using our RAC5 or RAC8 control panel. In case of an emergency, press the supervised EVAC button either on the Terra-SAP or via the remote EVC-SW02W EVAC switch unit in order to alert a central monitoring station able to respond to an incident.

The TERRACOM system devices are powered via POE or POE+ and include a range of IP, POE+ speakers and audio devices including our unique boundary microphone which can be used for both intercom and classroom speech reinforcement applications.

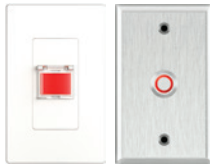
The TerraManager Graphical User Interface (GUI) software can be operated on a touch screen PC/Laptop, brings it all together by facilitating full control, paging, intercom, recording, streaming, audio routing, device I/O monitoring, and bell scheduling with the greatest ease. The TerraManager is customized to each application whether it is a district wide school intercom, campus paging, messaging/BGM distribution on multiple stores, and so on.

### SYSTEM DIAGRAM



**SYSTEM COMPONENTS**
**TERRA-SAP**  
**School Sound Amp Processor, 2CH x 20W**


- 2 microphone inputs with volume control
- 1 monitored emergency button to alert central monitoring station
- Master volume control
- USB 2.0 interface for music/pre-recorded message playback
- 2CH x 20W (Class-D amp) or bridged to 1CH x 40W amplification
- Sensitivity adjustment/phantom power/voice activated (VOX) for microphone input
- 1 stereo PC audio input for background music
- 3 balanced mic inputs used for student to intercom with administration
- 3 monitored control inputs for hidden emergency button or programmable source selector and volume control (RACS/8)
- Mini-USB interface connect to PC or Laptop for web conferencing
- 1 relay control output and 1 x Ethernet port (PoE+)


**EVC-SW01W** Supervised Emergency Button  
**EVC-SW02W** Supervised Emergency Button (Metal Type)

**ACTIVE IP LOUDSPEAKERS**

**APH30-IP**  
 IP Horn Speaker (20W External 24VDC/PoE+)  
**APH30-IPM**  
 IP Horn Speaker with Mic (20W External 24VDC/PoE+)

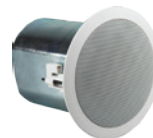
**JD20-IP**  
 Music Cabinet Loudspeaker (20W External 24VDC/PoE+)  
**JD20-IPM**  
 Music Cabinet Loudspeaker with Mic (20W External 24VDC/PoE+)

**PBC6-IP**  
 Open-Back Wall-Mount IP Speaker (6W External 24VDC/PoE+)  
**PBC6-IPM**  
 Open-Back Wall-Mount IP Speaker with Mic (6W External 24VDC/PoE+)

**LCS8-IP**  
 Twin-Cone IP Speaker (4W External 24VDC/PoE+)  
**LCS8-IPM**  
 Twin-Cone IP Speaker with Mic (4W External 24VDC/PoE+)

**LIS-IP**  
**LIS8X-IP**  
**LIS8-IPM**  
**LIS8X-IPM**

- Lay-in Tile IP Speaker (5W External 24VDC/PoE+)
- Lay-in Tile 2 Way IP Speaker (15W External 24VDC/PoE+)
- Lay-in Tile IP Speaker with Mic (5W External 24VDC/PoE+)
- Lay-in Tile 2 Way IP Speaker with Mic (15W External 24VDC/PoE+)

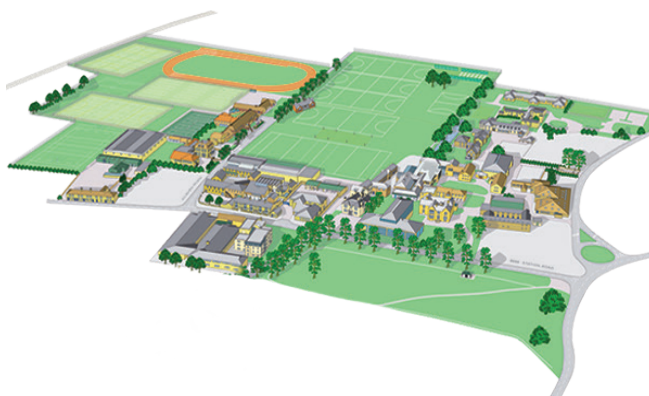

**CCS4-IP**  
**CCS6-IP**  
**CCS4-IPM**  
**CCS6-IPM**

- 4" Pro-Ceiling IP Speaker 2 Way (20W External 24VDC/PoE+)
- 6" Pro-Ceiling IP Speaker 2 Way (30W External 24VDC/PoE+)
- 4" Pro-Ceiling IP Speaker 2 Way with Mic (20W External 24VDC/PoE+)
- 6" Pro-Ceiling IP Speaker with Mic (30W External 24VDC/PoE+)

## FEATURES

- Control, monitor and management via web browser
- Function including paging, audio streaming, messaging, bell scheduling, hands-free intercom, voice evacuation, etc.
- 2CH x 20W or bridged to 1CH x 40W Class-D amplification
- Podium microphone inputs and logic inputs/outputs on Terra-SAP
- Instant alert by pressing the evac button on Terra-SAP or EVC-SW02W
- Excellent sound quality (24 bits and 48 kHz sampling)
- PoE+ or 24 VDC external power supply (if PoE+ is not available)

### TAKE ADVANTAGE OF A HIGHLY FLEXIBLE IP PLATFORM AND COST EFFECTIVE EDUCATIONAL SYSTEM TO MATCH YOUR SECURITY NEEDS



**Voice Evacuation / Message Playing / Intercom  
Paging / Bell Scheduling / Proactive Monitoring**  
with intuitive graphical control software TerraManager

**Cost-Efficient and Cost-Effective Open Architecture**  
offering flexible, real-time correctional IP-based integration

**Open for Customization**  
with integration of all TERRACOM devices for customized applications

**Web Browser**  
AGC, PEQ, AEC, ANR, monitor, level control, event and bell scheduler, priority management etc., password security and log reports can be managed by a dedicated web browser



**ATEİS Europe B.V.**  
**Europe & Africa**  
Celsiusstraat 1 - 2652 XN Lansingerland  
(Rotterdam Region), Netherlands  
Phone: +31 (0)10 2088690  
info@ateis-europe.com



**ATEİS France**  
8, rue de l'Europe - ZA de Font Ratel - 38640,  
Claix, France  
Phone: +33 (0)4 76992630  
contact@ateis.com



**ATEİS Suisse SA**  
**Switzerland & South-East Europe**  
Avenue des Baumettes 9, 1020 Renens VD,  
Switzerland  
Phone: +41 (0)218812510  
Fax: +41 (0)218812509  
info@ateis.ch



**Penton UK Ltd.**  
**UK & Ireland**  
Unit 2, Teville Industrials, Dominion Way, Worthing  
West Sussex, BN14 8NW, United Kingdom  
Tel: +44 (0)1903 215315  
Fax: +44 (0)1903 215415  
sales@pentonuk.co.uk



**ATEİS Middle East FZCO.**  
**Middle East & India**  
LIU No. 11, Dubai Silicon Oasis,  
293640 Dubai, United Arab Emirates  
Phone: +971 (4) 3262730  
Fax: +971 (4) 3262731  
info@ateis.ae



**Penton Audio USA**  
**USA, Canada & Latin America**  
21 Sabin Street Pawtucket, RI 02860, USA  
Phone: +1 401-727-1600  
Fax: +1 401-727-0003  
info@penton-usa.com



**ATEİS China**  
Room 610, No.255 Wubao Road, Minxing  
district, Shanghai, China  
Phone: +021-54495191/92  
Fax: +021-54495193  
sales@ateis.com.cn



**ATEİS Far-East**  
2F No.60, Xinghua 2nd Rd. Tanzi,  
Taichung, Taiwan  
Phone: +886 4 25333840  
Fax: +886 4 25333830  
sales@ateis-fareast.com



**ATEİS SE PTE. LTD.**  
**South-East Asia**  
Blk 5002 Ang Mo Kio Ave 5, #03-01B TECHplace  
II, Singapore 569871  
Phone: +65 6481 1968  
Fax: +65 6481 1960  
info@ateis-se.com.sg

